

Anti-CAMSAP2 兔多克隆抗体

K1345606 -20°C



产品信息

蛋白质全称	钙调蛋白调节血影蛋白相关蛋白 2
别名	CAMSAP1L1, KIAA1078
免疫原	KLH 偶联的小鼠 CAMSAP2 合成肽
Uniprot ID	Q8C1B1
抗体亚型	IgG
纯化方式	亲和纯化
亚细胞定位	细胞质, 细胞骨架, 高尔基体

应用

IHC/IF 免疫组织化学/免疫荧光

物种: 小鼠

稀释比: 1: 700-1: 1400

阳性样品: 睾丸

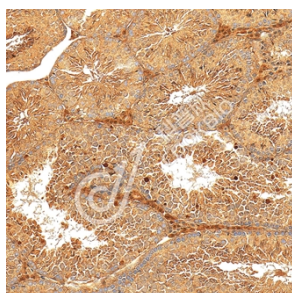
背景

Key microtubule-organizing protein that specifically binds the minus-end of non-centrosomal microtubules and regulates their dynamics and organization. Specifically recognizes growing microtubule minus-ends and autonomously decorates and stabilizes microtubule lattice formed by microtubule minus-end polymerization (By similarity). Acts on free microtubule minus-ends that are not capped by microtubule-nucleating proteins or other factors and protects microtubule minus-ends from depolymerization (By similarity). In addition, it also reduces the velocity of microtubule polymerization (By similarity). Through the microtubule cytoskeleton, also regulates the organization of cellular organelles including the Golgi and the early endosomes (By similarity).

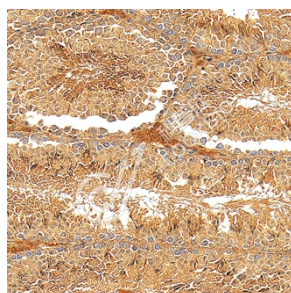
储存条件

储存条件: 自收到之日起 -20°C下储存一年, 避免反复冻融。
储存缓冲液: 含 0.15% ProClin300 防腐剂, 100 µg/mL 牛血清白蛋白和 50%甘油的磷酸盐缓冲液。

图像



IHC 检测 CAMSAP2 蛋白(货号 K1345606).
 样品: 小鼠睾丸, 4%多聚甲醛 (货号 KSG1101) 固定 12-24 小时.
 抗原修复: Tris-EDTA 抗原修复液(pH 9.0) (KSG1203), 98°C, 20 分钟.
 一抗: 1: 1100 稀释, 4°C 孵育过夜.
 二抗: S-vision 免疫组化多聚二抗(山羊抗兔),即用型 (货号 KB3906), 室温孵育 20 分钟.



IHC 检测 CAMSAP2 蛋白(货号 K1345606).
 样品: 小鼠睾丸, 4%多聚甲醛 (货号 KSG1101) 固定 12-24 小时.
 抗原修复: Tris-EDTA 抗原修复液(pH 9.0) (KSG1203), 98°C, 20 分钟.
 一抗: 1: 1100 稀释, 4°C 孵育过夜.
 二抗: S-vision 免疫组化多聚二抗(山羊抗兔),即用型 (货号 KB3906), 室温孵育 20 分钟.

For Research Use Only!

Ver. No.: V1-202603