

Anti-MGME1 兔多克隆抗体

K1345630 -20°C



产品信息

蛋白质全称	线粒体基因组维持核酸外切酶 1
别名	bA504H3.4, C20orf72, FLJ14597, MGME1
免疫原	KLH 偶联的小鼠 MGME1 合成肽
Uniprot ID	Q9CXC3
抗体亚型	IgG
纯化方式	亲和纯化
预测分子量 / 观测分子量	38 kDa / 39 kDa

应用

WB 免疫印迹

物种：小鼠

稀释比：1: 2000-1: 4000

阳性样品：心

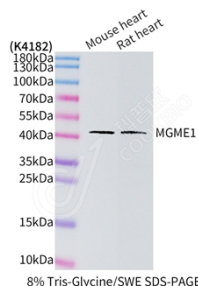
背景

Metal-dependent single-stranded DNA (ssDNA) exonuclease involved in mitochondrial genome maintenance. Has preference for 5'-3' exonuclease activity but is also capable of endonuclease activity on linear substrates. Necessary for maintenance of proper 7S DNA levels. Probably involved in mitochondrial DNA (mtDNA) repair, possibly via the processing of displaced DNA containing Okazaki fragments during RNA-primed DNA synthesis on the lagging strand or via processing of DNA flaps during long-patch base excision repair (By similarity). Specifically binds 5-hydroxymethylcytosine (5hmC)-containing DNA in stem cells.

储存条件

储存条件：自收到之日起 -20°C下储存一年，避免反复冻融。
储存缓冲液：含 0.15% ProClin300 防腐剂, 100 µg/mL 牛血清白蛋白和 50%甘油的磷酸盐缓冲液。

图像



WB 检测 MGME1 蛋白(货号 K1345630).
 样品: 经 RIPA 裂解液(货号 KSG2002)处理的蛋白质.
 封闭: 3%脱脂牛奶(货号 KSGC310001)溶于 TBST 溶液,
 室温孵育 1 小时.
 一抗: 1: 2000 稀释, 4°C 孵育过夜.
 二抗: HRP 标记山羊抗兔 IgG (H+L) (货号 KB69909), 1:
 5000 稀释, 室温孵育 1 小时.

For Research Use Only!

Ver. No.: V1-202603