

# Anti-NAPSIN A 小鼠单克隆抗体

**K2363030 -20°C**


## 产品信息

蛋白质全称	天冬氨酸蛋白酶 A
别名	Asp 4, ASP4, Aspartyl protease 4, KAP, Kdap, NAP1, NAPA, NAPSA, Napsin 1, Napsin A, napsin A aspartic peptidase, Pronapsin A, SNAPA, TA01/TA02, napsin A aspartic peptidase
免疫原	KLH 偶联的人 NAPSIN-A 合成肽
Uniprot ID	O96009
抗体亚型	IgG2b, κ
克隆号	5F11E2
纯化方式	亲和纯化
预测分子量 / 观测分子量	45 kDa / 35-50 kDa

## 应用

### WB 免疫印迹

物种: 人, 小鼠, 大鼠

稀释比: 1: 500-1: 1000

阳性样品: 肺

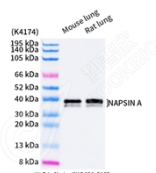
## 背景

Napsin A is an aspartic proteinase that is expressed in normal lung and kidney. In the lung, napsin A is expressed by type II pneumocytes and alveolar macrophages, where it plays a role in processing surfactant protein B. Napsin A is expressed in lung adenocarcinomas, where it can be used to identify primary and metastatic lesions with greater sensitivity compared to TTF-1. Napsin A expression has also been described in other types of cancer, such as kidney and thyroid cancer.

## 储存条件

**储存条件:** 自收到之日起 -20°C下储存一年, 避免反复冻融。  
**储存缓冲液:** 含 0.15% ProClin300 防腐剂, 100 μg/mL 牛血清白蛋白和 50%甘油的磷酸盐缓冲液。

## 图像



WB 检测 NAPSIN A 蛋白(货号 K2363030).  
 样品: 经 RIPA 裂解液(货号 KSG2002)处理的蛋白质.  
 封闭: 3%脱脂牛奶(货号 KSGC310001)溶于 TBST 溶液, 室温孵育 1 小时.  
 一抗: 1: 500 稀释, 4°C 孵育过夜.  
 二抗: HRP 标记山羊抗小鼠 IgG (H+L) (货号 KB69903), 1: 5000 稀释, 室温孵育 1 小时.

**For Research Use Only!**
**Ver. No.: V1-202603**