

Anti-NAP1L2 兔多克隆抗体

K1345954 -20°C



产品信息

蛋白质全称	核小体组蛋白 1 样 2
别名	Bpx, Nap1l2
免疫原	KLH 偶联的小鼠 NAP1L2 合成肽
Uniprot ID	P51860
抗体亚型	IgG
纯化方式	亲和纯化
亚细胞定位	细胞核

应用

IHC/IF 免疫组织化学/免疫荧光

物种：人，大鼠

稀释比：1: 700-1: 2100

阳性样品：肾

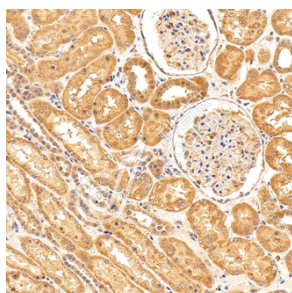
背景

Proper nucleosome assembly is critical for compacting DNA into chromatin. In human and mouse there are 5 protein-coding genes which comprise the nucleosome assembly protein (NAP) family. The remaining three family members, NAP1L2, NAP1L3 and NAP1L5 are neuron-specific nucleosome assembly proteins translated from intronless genes which are monoallelically expressed. NAP1L2 (nucleosome assembly protein 1-like 2), also known as BPX (brain specific protein, X-linked), is a 460 amino acid protein containing acidic domains which are thought to mediate histone interactions. NAP1L2 binds to chromatin and interacts with Histones H3 and H4. The function of NAP1L2 is not clearly defined although evidence suggests that NAP1L2 influences histone acetylation and therefore may play a significant role in regulating transcription in developing neurons.

储存条件

储存条件：自收到之日起 -20°C下储存一年，避免反复冻融。
储存缓冲液：含 0.15% ProClin300 防腐剂, 100 μg/mL 牛血清白蛋白和 50%甘油的磷酸盐缓冲液。

图像



IHC 检测 NAP1L2 蛋白(货号 K1345954).
 样品: 人肾, 4%多聚甲醛 (货号 KSG1101) 固定 12-24 小时.
 抗原修复: Tris-EDTA 抗原修复液(pH 9.0) (KSG1203), 98°C, 20 分钟.
 一抗: 1: 1400 稀释, 4°C 孵育过夜.
 二抗: S-vision 免疫组化多聚二抗(山羊抗兔),即用型 (货号 KB3906), 室温孵育 20 分钟.

For Research Use Only!

Ver. No.: V1-202603