

# Anti-Podoplanin/gp36 兔多克隆抗体

**K1346329** -20°C


## 产品信息

蛋白质全称	足细胞膜蛋白
别名	AGGRUS, D2 40, D2 40,M2A, Glycoprotein 36, GP36, Gp38, GP40, HT1A 1, M2A, OTS8, PA2.26, PA2.26 antigen, PDPN, podoplanin, PSEC0025, T1 alpha, T1A, T1A 2
免疫原	KLH 偶联的小鼠 Podoplanin 合成肽
Uniprot ID	Q62011
抗体亚型	IgG
纯化方式	亲和纯化
预测分子量 / 观测分子量	18 kDa / 38 kDa

## 应用

### WB 免疫印迹

物种：人，小鼠，大鼠

稀释比：1: 300-1: 800

阳性样品：睾丸

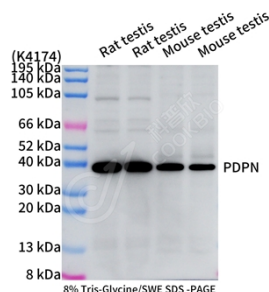
## 背景

Mediates effects on cell migration and adhesion through its different partners. During development plays a role in blood and lymphatic vessels separation by binding CLEC1B, triggering CLEC1B activation in platelets and leading to platelet activation and/or aggregation. Interaction with CD9, on the contrary, attenuates platelet aggregation and pulmonary metastasis induced by PDPN. Mediates effects on cell migration and adhesion through its different partners. Through MSN or EZR interaction promotes epithelial-mesenchymal transition (EMT) leading to ERZ phosphorylation and triggering RHOA activation leading to cell migration increase and invasiveness. Interaction with CD44 promotes directional cell migration in epithelial and tumor cells.

## 储存条件

**储存条件：**自收到之日起 -20°C下储存一年，避免反复冻融。  
**储存缓冲液：**含 0.15% ProClin300 防腐剂, 100 µg/mL 牛血清白蛋白和 50%甘油的磷酸盐缓冲液。

## 图像



WB 检测 Podoplanin/gp36 蛋白(货号 K1346329).  
 样品: 经 RIPA 裂解液(货号 KSG2002)处理的蛋白质.  
 封闭: 3%脱脂牛奶(货号 KSGC310001)溶于 TBST 溶液,  
 室温孵育 1 小时.  
 一抗: 1: 500 稀释, 4°C 孵育过夜.  
 二抗: HRP 标记山羊抗兔 IgG (H+L) (货号 KB69909), 1: 5000 稀释, 室温孵育 1 小时.

**For Research Use Only!**
**Ver. No.: V1-202603**