

Anti-MDM2 兔多克隆抗体

K1346332 -20°C



产品信息

蛋白质全称	E3 泛素蛋白连接酶 Mdm2
别名	Double minute 2 protein, Oncoprotein Mdm2, RING-type E3 ubiquitin transferase Mdm2, p53-binding protein Mdm2, hdm2, HDMX, MDM2, p53 binding protein Mdm2
免疫原	KLH 偶联的小鼠 MDM2 合成肽
Uniprot ID	P23804
抗体亚型	IgG
纯化方式	亲和纯化
预测分子量 / 观测分子量	54,49 kDa / 40-55 kDa

应用

WB 免疫印迹

物种：小鼠，大鼠

稀释比：1: 300-1: 800

阳性样品：脑

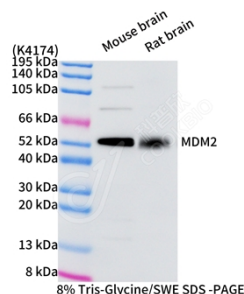
背景

MDM2 is a target of the transcription factor tumor protein p53. The encoded protein is a nuclear phosphoprotein that binds and inhibits transactivation by tumor protein p53, as part of an autoregulatory negative feedback loop. Over expression of MDM2 can result in excessive inactivation of tumor protein p53, diminishing its tumor suppressor function. This protein has E3 ubiquitin ligase activity, which targets tumor protein p53 for proteasomal degradation. This protein also affects the cell cycle, apoptosis, and tumorigenesis through interactions with other proteins, including retinoblastoma 1 and ribosomal protein L5.

储存条件

储存条件：自收到之日起 -20°C下储存一年，避免反复冻融。
储存缓冲液：含 0.15% ProClin300 防腐剂, 100 μg/mL 牛血清白蛋白和 50%甘油的磷酸盐缓冲液。

图像



WB 检测 MDM2 蛋白(货号 K1346332).
 样品: 经 RIPA 裂解液(货号 KSG2002)处理的蛋白质.
 封闭: 3%脱脂牛奶(货号 KSGC310001)溶于 TBST 溶液,
 室温孵育 1 小时.
 一抗: 1: 500 稀释, 4°C 孵育过夜.
 二抗: HRP 标记山羊抗兔 IgG (H+L) (货号 KB69909), 1:
 5000 稀释, 室温孵育 1 小时.

For Research Use Only!

Ver. No.: V1-202603