

Anti-PAK1 兔多克隆抗体

K1346407 -20°C



产品信息

蛋白质全称	丝氨酸/苏氨酸蛋白激酶 PAK1
别名	PAK1, PAKalpha, p21 (RAC1) activated kinase 1
免疫原	KLH 偶联的小鼠 PAK1 合成磷酸肽
Uniprot ID	O88643
抗体亚型	IgG
纯化方式	亲和纯化
预测分子量 / 观测分子量	61 kDa / 61 kDa

应用

WB 免疫印迹

物种: 小鼠, 大鼠

稀释比: 1: 300-1: 1000

阳性样品: 脑

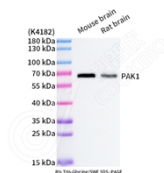
背景

PAK1 is one of six members of the PAK family of serine/threonine kinases which are broadly divided into group I (PAK1, PAK2 and PAK3) and group II (PAK4, PAK6 and PAK5/7). PAK1 localizes in distinct sub-cellular domains in the cytoplasm and nucleus which regulates cytoskeleton remodeling, phenotypic signaling and gene expression, and affects a wide variety of cellular processes such as directional motility, invasion, metastasis, growth, cell cycle progression, angiogenesis.

储存条件

储存条件: 自收到之日起 -20°C下储存一年, 避免反复冻融。
储存缓冲液: 含 0.15% ProClin300 防腐剂, 100 µg/mL 牛血清白蛋白和 50%甘油的磷酸盐缓冲液。

图像



WB 检测 PAK1 蛋白(货号 K1346407).

样品: 经 RIPA 裂解液(货号 KSG2002)处理的蛋白质.

封闭: 3%脱脂牛奶(货号 KSGC310001)溶于 TBST 溶液,

室温孵育 1 小时.

一抗: 1: 1000 稀释, 4°C 孵育过夜.

二抗: HRP 标记山羊抗兔 IgG (H+L) (货号 KB69909), 1:

5000 稀释, 室温孵育 1 小时.

For Research Use Only!

Ver. No.: V1-202603