

# Anti-MKK6 兔多克隆抗体

K1346545 -20°C



## 产品信息

蛋白质全称	双特异性丝裂原活化蛋白激酶激酶 6
别名	MAP kinase kinase 6, MAPKK 6, MAPK/ERK kinase 6, MEK 6, SAPKK3, Map2k6, Prkmk6, MAPKK6
免疫原	KLH 偶联的小鼠 MKK6 合成肽
Uniprot ID	P70236
抗体亚型	IgG
纯化方式	亲和纯化
预测分子量 / 观测分子量	37 kDa / 37 kDa

## 应用

### WB 免疫印迹

物种：人，小鼠

稀释比：1: 300-1: 600

阳性样品：骨骼肌，脑

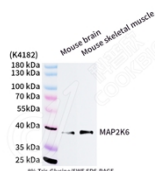
## 背景

This gene encodes a member of the dual specificity protein kinase family, which functions as a mitogen-activated protein (MAP) kinase kinase. MAP kinases, also known as extracellular signal-regulated kinases (ERKs), act as an integration point for multiple biochemical signals. This protein phosphorylates and activates p38 MAP kinase in response to inflammatory cytokines or environmental stress. As an essential component of p38 MAP kinase mediated signal transduction pathway, this gene is involved in many cellular processes such as stress induced cell cycle arrest, transcription activation and apoptosis.

## 储存条件

**储存条件：**自收到之日起 -20°C下储存一年，避免反复冻融。  
**储存缓冲液：**含 0.15% ProClin300 防腐剂, 100 μg/mL 牛血清白蛋白和 50%甘油的磷酸盐缓冲液。

## 图像



WB 检测 MKK6 蛋白(货号 K1346545).  
 样品: 经 RIPA 裂解液(货号 KSG2002)处理的蛋白质.  
 封闭: 3%脱脂牛奶(货号 KSGC310001)溶于 TBST 溶液,  
 室温孵育 1 小时.  
 一抗: 1: 300 稀释, 4°C 孵育过夜.  
 二抗: HRP 标记山羊抗兔 IgG (H+L) (货号 KB69909), 1:  
 5000 稀释, 室温孵育 1 小时.

For Research Use Only!

Ver. No.: V1-202603