

Anti-alpha 1 Antitrypsin 兔多克隆抗体

K1346668 -20°C



产品信息

蛋白质全称	α1-抗胰蛋白酶
别名	AAT, Alpha-1 protease inhibitor 2, Alpha-1-antiproteinase, Serine protease inhibitor 1-2, Serine protease inhibitor A1b, Serpin A1b, Serpina1b, Aat2, Dom2, Spi1-2
免疫原	KLH 偶联的人 alpha 1 Antitrypsin 合成肽
Uniprot ID	P01009
抗体亚型	IgG
纯化方式	亲和纯化
预测分子量 / 观测分子量	47 kDa / 51-55 kDa

应用

WB 免疫印迹

物种：人
 稀释比：1: 300-1: 400
 阳性样品：MCF7 细胞

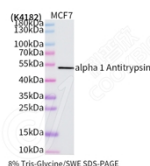
背景

Inhibitor of serine proteases. Its primary target is elastase, but it also has a moderate affinity for plasmin and thrombin. Irreversibly inhibits trypsin, chymotrypsin and plasminogen activator. The aberrant form inhibits insulin-induced NO synthesis in platelets, decreases coagulation time and has proteolytic activity against insulin and plasmin.; [Short peptide from AAT]: Reversible chymotrypsin inhibitor. It also inhibits elastase, but not trypsin. Its major physiological function is the protection of the lower respiratory tract against proteolytic destruction by human leukocyte elastase (HLE).

储存条件

储存条件：自收到之日起 -20°C下储存一年，避免反复冻融。
储存缓冲液：含 0.15% ProClin300 防腐剂, 100 μg/mL 牛血清白蛋白和 50%甘油的磷酸盐缓冲液。

图像



WB 检测 alpha 1 Antitrypsin 蛋白(货号 K1346668).
 样品: 经 RIPA 裂解液(货号 KSG2002)处理的蛋白质.
 封闭: 3%脱脂牛奶(货号 KSGC310001)溶于 TBST 溶液,
 室温孵育 1 小时.
 一抗: 1: 300 稀释, 4°C 孵育过夜.
 二抗: HRP 标记山羊抗兔 IgG (H+L) (货号 KB69909), 1:
 5000 稀释, 室温孵育 1 小时.

For Research Use Only!

Ver. No.: V1-202603