

Anti-CEACAM6 兔多克隆抗体

K1344106 -20°C



产品信息

蛋白质全称	癌胚抗原相关细胞黏附分子 6
别名	Carcinoembryonic antigen CGM1, CD66D, CEACAM3, CGM1, W264, W282
免疫原	KLH 偶联的人 CEACAM6 合成肽
Uniprot ID	P40199
抗体亚型	IgG
纯化方式	亲和纯化
亚细胞定位	细胞膜

应用

IHC/IF 免疫组织化学/免疫荧光

物种：人
 稀释比：1: 300-1: 900
 阳性样品：胃

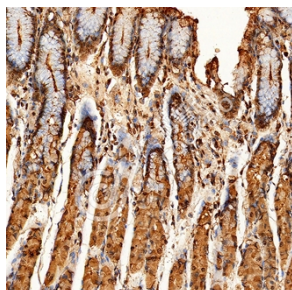
背景

Cell surface glycoprotein that plays a role in cell adhesion and tumor progression . Intercellular adhesion occurs in a calcium- and fibronectin-independent manner . Mediates homophilic and heterophilic cell adhesion with other carcinoembryonic antigen-related cell adhesion molecules, such as CEACAM5 and CEACAM8 . Heterophilic interaction with CEACAM8 occurs in activated neutrophils . Plays a role in neutrophil adhesion to cytokine-activated endothelial cells . Plays a role as an oncogene by promoting tumor progression; positively regulates cell migration, cell adhesion to endothelial cells and cell invasion .

储存条件

储存条件：自收到之日起 -20°C下储存一年，避免反复冻融。
储存缓冲液：含 0.15% ProClin300 防腐剂, 100 μg/mL 牛血清白蛋白和 50%甘油的磷酸盐缓冲液。

图像



IHC 检测 CEACAM6 蛋白(货号 K1344106).
 样品: 人胃, 4%多聚甲醛 (货号 KSG1101) 固定 12-24 小时.
 抗原修复: 柠檬酸抗原修复液(干粉, pH 6.0) (KSG1201), 98°C, 20 分钟.
 一抗: 1: 600 稀释, 4°C 孵育过夜.
 二抗: S-vision 免疫组化多聚二抗(山羊抗兔), 即用型 (货号 KB3906), 室温孵育 20 分钟.

For Research Use Only!

Ver. No.: V1-202603