

Anti-P2Y2 兔多克隆抗体

K1344313 -20°C



产品信息

蛋白质全称	P2Y 嘌呤受体 2
别名	P2Y2, ATP receptor, P2U purinoceptor 1, P2U1, Purinergic receptor, P2ry2, P2ru1
免疫原	KLH 偶联的小鼠 P2Y2 合成肽
Uniprot ID	P35383
抗体亚型	IgG
纯化方式	亲和纯化
预测分子量 / 观测分子量	42 kDa / 50 kDa

应用

WB 免疫印迹

物种: 人, 小鼠, 大鼠

稀释比: 1: 1000-1: 2000

阳性样品: 心

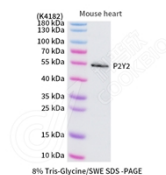
背景

The product of this gene belongs to the family of G-protein coupled receptors. This family has several receptor subtypes with different pharmacological selectivity, which overlaps in some cases, for various adenosine and uridine nucleotides. This receptor is responsive to both adenosine and uridine nucleotides. It may participate in control of the cell cycle of endometrial carcinoma cells. Three transcript variants encoding the same protein have been identified for this gene.

储存条件

储存条件: 自收到之日起 -20°C下储存一年, 避免反复冻融。
储存缓冲液: 含 0.15% ProClin300 防腐剂, 100 μg/mL 牛血清白蛋白和 50%甘油的磷酸盐缓冲液。

图像



WB 检测 P2Y2 蛋白(货号 K1344313).
 样品: 经 RIPA 裂解液(货号 KSG2002)处理的蛋白质.
 封闭: 3%脱脂牛奶(货号 KSGC310001)溶于 TBST 溶液,
 室温孵育 1 小时.
 一抗: 1: 1000 稀释, 4°C 孵育过夜.
 二抗: HRP 标记山羊抗兔 IgG (H+L) (货号 KB69909), 1:
 5000 稀释, 室温孵育 1 小时.

For Research Use Only!

Ver. No.: V1-202603