

Anti-Bag1 兔多克隆抗体

K1346791 -20°C



产品信息

蛋白质全称	BAG 家族分子伴侣调节因子 1
别名	BAG 1, BAG1, BAG1L speicfic, BAG1M, BAG1S, HAP, RAP46
免疫原	KLH 偶联的小鼠 Bag1 合成肽
Uniprot ID	Q60739
抗体亚型	IgG
纯化方式	亲和纯化
亚细胞定位	细胞核, 细胞质

应用

IHC/IF 免疫组织化学/免疫荧光

物种: 小鼠, 大鼠

稀释比: 1: 150-1: 600

阳性样品: 睾丸

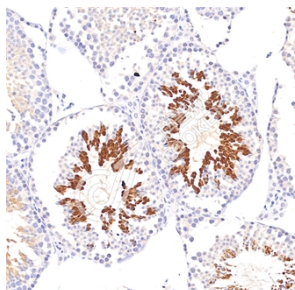
背景

Co-chaperone for HSP70 and HSC70 chaperone proteins. Acts as a nucleotide-exchange factor promoting the release of ADP from the HSP70 and HSC70 proteins thereby triggering client/substrate protein release. Nucleotide release is mediated via its binding to the nucleotide-binding domain of HSPA8/HSC70 where as the substrate release is mediated via its binding to the substrate-binding domain of HSPA8/HSC70. Inhibits the pro-apoptotic function of PPP1R15A, and has anti-apoptotic activity. Markedly increases the anti-cell death function of BCL2 induced by various stimuli.

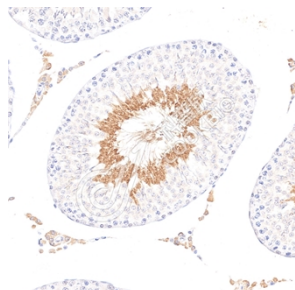
储存条件

储存条件: 自收到之日起 -20°C下储存一年, 避免反复冻融。
储存缓冲液: 含 0.15% ProClin300 防腐剂, 100 µg/mL 牛血清白蛋白和 50%甘油的磷酸盐缓冲液。

图像



IHC 检测 Bag1 蛋白(货号 K1346791).
 样品: 小鼠睾丸, 4%多聚甲醛(货号 KSG1101) 固定 12-24 小时.
 抗原修复: Tris-EDTA 抗原修复液(pH 9.0) (KSG1203), 98°C, 20 分钟.
 一抗: 1: 400 稀释, 4°C 孵育过夜.
 二抗: S-vision 免疫组化多聚二抗(山羊抗兔), 即用型(货号 KB3906), 室温孵育 20 分钟.



IHC 检测 Bag1 蛋白(货号 K1346791).
 样品: 大鼠睾丸, 4%多聚甲醛(货号 KSG1101) 固定 12-24 小时.
 抗原修复: Tris-EDTA 抗原修复液(pH 9.0) (KSG1203), 98°C, 20 分钟.
 一抗: 1: 400 稀释, 4°C 孵育过夜.
 二抗: S-vision 免疫组化多聚二抗(山羊抗兔), 即用型(货号 KB3906), 室温孵育 20 分钟.

For Research Use Only!

Ver. No.: V1-202603