

# Anti-RALBP1 兔多克隆抗体

K1346794 -20°C



## 产品信息

蛋白质全称	RalA 结合蛋白 1
别名	76 kDa Ral interacting protein, DNP SG ATPase, Ral interacting protein 1, ralA binding protein 1, RALBP1, RIP1
免疫原	KLH 偶联的小鼠 RALBP1 合成肽
Uniprot ID	Q62172
抗体亚型	IgG
纯化方式	亲和纯化
亚细胞定位	细胞膜, 细胞质, 细胞骨架

## 应用

### IHC/IF 免疫组织化学/免疫荧光

物种: 人, 小鼠, 大鼠

稀释比: 1: 150-1: 600

阳性样品: 肾, 骨骼肌

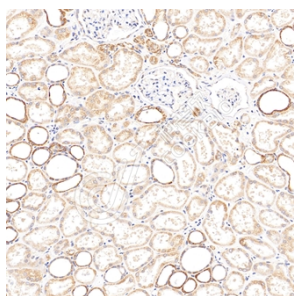
## 背景

Multifunctional protein that functions as a downstream effector of RALA and RALB. As a GTPase-activating protein/GAP can inactivate CDC42 and RAC1 by stimulating their GTPase activity. As part of the Ral signaling pathway, may also regulate ligand-dependent EGF and insulin receptors-mediated endocytosis. During mitosis, may act as a scaffold protein in the phosphorylation of EPSIN/EPN1 by the mitotic kinase cyclin B-CDK1, preventing endocytosis during that phase of the cell cycle. During mitosis, also controls mitochondrial fission as an effector of RALA. Recruited to mitochondrion by RALA, acts as a scaffold to foster the mitotic kinase cyclin B-CDK1-mediated phosphorylation and activation of DNML1. Could also function as a primary ATP-dependent active transporter for glutathione conjugates of electrophiles. May also actively catalyze the efflux of a wide range of substrates including xenobiotics like doxorubicin contributing to cell multidrug resistance.

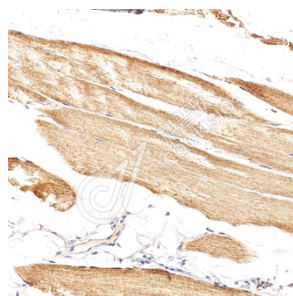
## 储存条件

**储存条件:** 自收到之日起 -20°C下储存一年, 避免反复冻融。  
**储存缓冲液:** 含 0.15% ProClin300 防腐剂, 100 µg/mL 牛血清白蛋白和 50%甘油的磷酸盐缓冲液。

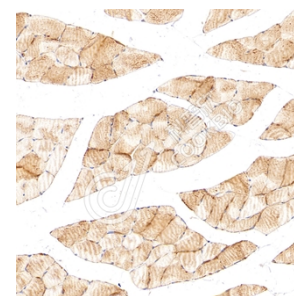
## 图像



IHC 检测 RALBP1 蛋白(货号 K1346794).  
 样品: 人肾, 4%多聚甲醛 (货号 KSG1101) 固定 12-24 小时.  
 抗原修复: Tris-EDTA 抗原修复液(pH 9.0) (KSG1203), 98°C, 20 分钟.  
 一抗: 1: 400 稀释, 4°C 孵育过夜.  
 二抗: S-vision 免疫组化多聚二抗(山羊抗兔),即用型 (货号 KB3906), 室温孵育 20 分钟.



IHC 检测 RALBP1 蛋白(货号 K1346794).  
 样品: 小鼠骨骼肌, 4%多聚甲醛 (货号 KSG1101) 固定 12-24 小时.  
 抗原修复: Tris-EDTA 抗原修复液(pH 9.0) (KSG1203), 98°C, 20 分钟.  
 一抗: 1: 400 稀释, 4°C 孵育过夜.  
 二抗: S-vision 免疫组化多聚二抗(山羊抗兔),即用型 (货号 KB3906), 室温孵育 20 分钟.



IHC 检测 RALBP1 蛋白(货号 K1346794).  
 样品: 大鼠骨骼肌, 4%多聚甲醛 (货号 KSG1101) 固定 12-24 小时.  
 抗原修复: Tris-EDTA 抗原修复液(pH 9.0) (KSG1203), 98°C, 20 分钟.  
 一抗: 1: 400 稀释, 4°C 孵育过夜.  
 二抗: S-vision 免疫组化多聚二抗(山羊抗兔),即用型 (货号 KB3906), 室温孵育 20 分钟.

**For Research Use Only!**

**Ver. No.: V1-202603**