

# Anti-HLA-DR 兔多克隆抗体

**K1346929** -20°C


## 产品信息

蛋白质全称	HLA II 类组织相容性抗原 DR $\alpha$ 链
别名	HLA DRA, HLA DRA1, HLA-DR, HLA-DRA, MHC class II antigen DRA
免疫原	对应于人 HLA-DRA 的重组蛋白
Uniprot ID	P01903
抗体亚型	IgG
纯化方式	亲和纯化
预测分子量 / 观测分子量	29 kDa / 34 kDa

## 应用

### WB 免疫印迹

物种：人  
 稀释比：1: 500-1: 2000  
 阳性样品：U-87 MG 细胞

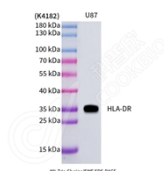
## 背景

An alpha chain of antigen-presenting major histocompatibility complex class II (MHCII) molecule. In complex with the beta chain HLA-DRB, displays antigenic peptides on professional antigen presenting cells (APCs) for recognition by alpha-beta T cell receptor (TCR) on HLA-DR-restricted CD4-positive T cells. This guides antigen-specific T-helper effector functions, both antibody-mediated immune response and macrophage activation, to ultimately eliminate the infectious agents and transformed cells. Typically presents extracellular peptide antigens of 10 to 30 amino acids that arise from proteolysis of endocytosed antigens in lysosomes. In the tumor microenvironment, presents antigenic peptides that are primarily generated in tumor-resident APCs likely via phagocytosis of apoptotic tumor cells or macropinocytosis of secreted tumor proteins.

## 储存条件

**储存条件：**自收到之日起 -20°C下储存一年，避免反复冻融。  
**储存缓冲液：**含 0.15% ProClin300 防腐剂, 100  $\mu$ g/mL 牛血清白蛋白和 50%甘油的磷酸盐缓冲液。

## 图像



WB 检测 HLA-DR 蛋白(货号 K1346929).  
 样品: 经 RIPA 裂解液(货号 KSG2002)处理的蛋白质.  
 封闭: 3%脱脂牛奶(货号 KSGC310001)溶于 TBST 溶液,  
 室温孵育 1 小时.  
 一抗: 1: 500 稀释, 4°C 孵育过夜.  
 二抗: HRP 标记山羊抗兔 IgG (H+L) (货号 KB69909), 1:  
 5000 稀释, 室温孵育 1 小时.

**For Research Use Only!**
**Ver. No.: V1-202603**