

Recombinant Anti-MEK1 antibody (小鼠单克隆抗体)

K546803 -20°C


产品信息

蛋白质全称	双特异性丝裂原活化蛋白激酶激酶 1
别名	MAP2K1, CFC3, MAPKK1, MEK1, MKK1, PRKMK1, mitogen activated protein kinase kinase 1, ERK activator kinase 1, MAP kinase kinase 1
免疫原	KLH 偶联的小鼠 MEK1 合成肽
Uniprot ID	P31938
抗体亚型	IgG1, κ
克隆号	SB158
纯化方式	亲和纯化
预测分子量 / 观测分子量	43 kDa / 45 kDa

应用

WB 免疫印迹

物种: 人, 小鼠, 大鼠

稀释比: 1: 500-1: 1000

阳性样品: 肺

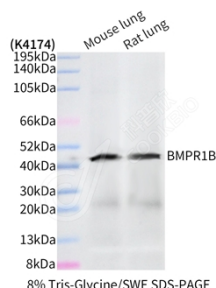
背景

The protein is a member of the dual-specificity protein kinase family that acts as a mitogen-activated protein (MAP) kinase kinase. MAP kinases, also known as extracellular signal-regulated kinases (ERKs), act as an integration point for multiple biochemical signals. This protein kinase lies upstream of MAP kinases and stimulates the enzymatic activity of MAP kinases upon activation by a wide variety of extra- and intracellular signals. As an essential component of the MAP kinase signal transduction pathway, this kinase is involved in many cellular processes such as proliferation, differentiation, transcription regulation and development.

储存条件

储存条件: 自收到之日起 -20°C下储存一年, 避免反复冻融。
储存缓冲液: 含 0.15% ProClin300 防腐剂, 100 μg/mL 牛血清白蛋白和 50%甘油的磷酸盐缓冲液。

图像



WB 检测 MEK1 蛋白(货号 K546803).
 样品: 经 RIPA 裂解液(货号 KSG2002)处理的蛋白质.
 封闭: 3%脱脂牛奶(货号 KSGC310001)溶于 TBST 溶液,
 室温孵育 1 小时.
 一抗: 1: 500 稀释, 4°C 孵育过夜.
 二抗: HRP 标记山羊抗小鼠 IgG (H+L) (货号 KB69903),
 1: 5000 稀释, 室温孵育 1 小时.

For Research Use Only!
Ver. No.: V1-202603