

Anti-ZO1 tight junction protein 兔多克隆抗体

K1347058 -20°C


产品信息

蛋白质全称	紧密连接蛋白 ZO1
别名	TJP1, ZO-1, Tight junction protein 1
免疫原	人 ZO1 tight junction protein 重组蛋白
Uniprot ID	Q07157
抗体亚型	IgG
纯化方式	亲和纯化
亚细胞定位	细胞膜, 细胞连接
预测分子量 / 观测分子量	195 kDa / 195-245 kDa

应用

WB 免疫印迹

物种: 人, 小鼠, 大鼠
 稀释比: 1: 500-1: 1000
 阳性样品:

IHC/IF 免疫组织化学/免疫荧光

物种: 人, 小鼠, 大鼠
 稀释比: 1: 500-1: 1500
 阳性样品: 肾

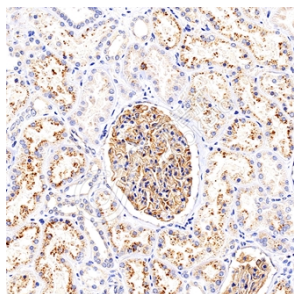
背景

Tjp1, Tjp2, and Tjp3 are closely related scaffolding proteins that link tight junction (TJ) transmembrane proteins such as claudins, junctional adhesion molecules, and occludin to the actin cytoskeleton. The tight junction acts to limit movement of substances through the paracellular space and as a boundary between the compositionally distinct apical and basolateral plasma membrane domains of epithelial and endothelial cells. Necessary for lumenogenesis, and particularly efficient epithelial polarization and barrier formation. Plays a role in the regulation of cell migration by targeting Cdc42bpb to the leading edge of migrating cells. Plays an important role in podosome formation and associated function, thus regulating cell adhesion and matrix remodeling. With Tjp2 and Tjp3, participates in the junctional retention and stability of the transcription factor Dbpa, but is not involved in its shuttling to the nucleus.

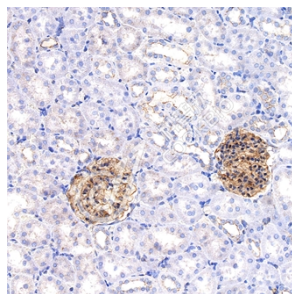
储存条件

储存条件: 自收到之日起 -20°C下储存一年, 避免反复冻融。
储存缓冲液: 含 0.15% ProClin300 防腐剂, 100 μg/mL 牛血清白蛋白和 50%甘油的磷酸盐缓冲液。

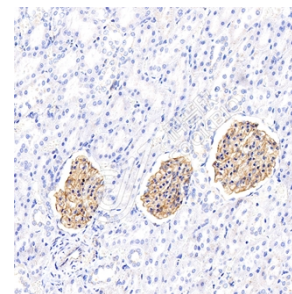
图像



IHC 检测 ZO1 tight junction protein 蛋白(货号 K1347058).
 样品: 人肾, 4%多聚甲醛 (货号 KSG1101) 固定 12-24 小时.
 抗原修复: Tris-EDTA 抗原修复液(pH 9.0) (货号 KSG1218), 高压锅均匀喷气计时 2 分钟.
 一抗: 1: 1000 稀释, 4°C 孵育过夜.
 二抗: S-vision 免疫组化多聚二抗(山羊抗兔),即用型 (货号 KB3906), 室温孵育 20 分钟.



IHC 检测 ZO1 tight junction protein 蛋白(货号 K1347058).
 样品: 小鼠肾, 4%多聚甲醛 (货号 KSG1101) 固定 12-24 小时.
 抗原修复: Tris-EDTA 抗原修复液(pH 9.0) (货号 KSG1218), 高压锅均匀喷气计时 2 分钟.
 一抗: 1: 1000 稀释, 4°C 孵育过夜.
 二抗: S-vision 免疫组化多聚二抗(山羊抗兔),即用型 (货号 KB3906), 室温孵育 20 分钟.



IHC 检测 ZO1 tight junction protein 蛋白(货号 K1347058).
 样品: 大鼠肾, 4%多聚甲醛 (货号 KSG1101) 固定 12-24 小时.
 抗原修复: Tris-EDTA 抗原修复液(pH 9.0) (货号 KSG1218), 高压锅均匀喷气计时 2 分钟.
 一抗: 1: 1000 稀释, 4°C 孵育过夜.
 二抗: S-vision 免疫组化多聚二抗(山羊抗兔),即用型 (货号 KB3906), 室温孵育 20 分钟.

For Research Use Only!
Ver. No.: V1-202603