

Anti-CD11b 小鼠单克隆抗体

K2377067 -20°C



产品信息

蛋白质全称	整合素 α -M
别名	CD11B, CR 3 alpha chain, CR3A, ITGAM, MAC 1, MAC1A, MO1A, Neutrophil adherence receptor, SLEB6
免疫原	人 CD11b 重组蛋白
Uniprot ID	P11215
抗体亚型	IgG1, κ
克隆号	6F1C3
纯化方式	亲和纯化
亚细胞定位	细胞膜

应用

IHC/IF 免疫组织化学/免疫荧光

物种: 人

稀释比: 1: 500-1: 2000

阳性样品: 结肠, 扁桃体

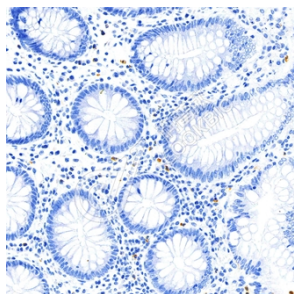
背景

Integrin ITGAM/ITGB2 is implicated in various adhesive interactions of monocytes, macrophages and granulocytes as well as in mediating the uptake of complement-coated particles and pathogens (By similarity). It is identical with CR-3, the receptor for the iC3b fragment of the third complement component. It probably recognizes the R-G-D peptide in C3b. Integrin ITGAM/ITGB2 is also a receptor for fibrinogen, factor X and ICAM1. It recognizes P1 and P2 peptides of fibrinogen gamma chain. Regulates neutrophil migration. In association with beta subunit ITGB2/CD18, required for CD177-PRTN3-mediated activation of TNF primed neutrophils (By similarity). May regulate phagocytosis-induced apoptosis in extravasated neutrophils (By similarity). May play a role in mast cell development (By similarity).

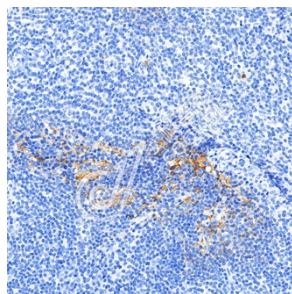
储存条件

储存条件: 自收到之日起 -20°C下储存一年, 避免反复冻融。
储存缓冲液: 含 0.15% ProClin300 防腐剂, 100 μ g/mL 牛血清白蛋白和 50%甘油的磷酸盐缓冲液。

图像



IHC 检测 CD11b 蛋白(货号 K2377067).
 样品: 人结肠, 4%多聚甲醛 (货号 KSG1101) 固定 12-24 小时.
 抗原修复: 柠檬酸抗原修复液(干粉, pH 6.0) (KSG1201), 高压锅均匀喷气计时 2 分钟.
 一抗: 1: 1300 稀释, 4°C 孵育过夜.
 二抗: S-vision 免疫组化多聚二抗(山羊抗小鼠), 即用型 (货号 KB3903), 室温孵育 20 分钟.



IHC 检测 CD11b 蛋白(货号 K2377067).
 样品: 人扁桃体, 4%多聚甲醛 (货号 KSG1101) 固定 12-24 小时.
 抗原修复: 柠檬酸抗原修复液(干粉, pH 6.0) (KSG1201), 高压锅均匀喷气计时 2 分钟.
 一抗: 1: 1300 稀释, 4°C 孵育过夜.
 二抗: S-vision 免疫组化多聚二抗(山羊抗小鼠), 即用型 (货号 KB3903), 室温孵育 20 分钟.

For Research Use Only!

Ver. No.: V1-202603