

# Recombinant Anti-PODXL antibody (兔单克隆抗体)

K5450060 -20°C



## 产品信息

蛋白质全称	足糖萼蛋白
别名	GCTM 2 antigen, Gp200, PC, PCLP, PCLP-1, PCLP1, Podocalyxin, podocalyxin like, Podocalyxin like protein 1, PODXL
免疫原	人 PODXL 重组蛋白
Uniprot ID	O00592
抗体亚型	IgG, κ
克隆号	SB224
纯化方式	亲和纯化
亚细胞定位	细胞膜

## 应用

### IHC/IF 免疫组织化学/免疫荧光

物种：人  
 稀释比：1: 500-1: 1000  
 阳性样品：食管癌，肾

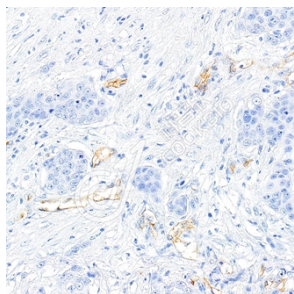
## 背景

Involved in the regulation of both adhesion and cell morphology and cancer progression. Functions as an anti-adhesive molecule that maintains an open filtration pathway between neighboring foot processes in the podocyte by charge repulsion. Acts as a pro-adhesive molecule, enhancing the adherence of cells to immobilized ligands, increasing the rate of migration and cell-cell contacts in an integrin-dependent manner. Induces the formation of apical actin-dependent microvilli. Involved in the formation of a preapical plasma membrane subdomain to set up initial epithelial polarization and the apical lumen formation during renal tubulogenesis. Plays a role in cancer development and aggressiveness by inducing cell migration and invasion through its interaction with the actin-binding protein EZR. Affects EZR-dependent signaling events, leading to increased activities of the MAPK and PI3K pathways in cancer cells.

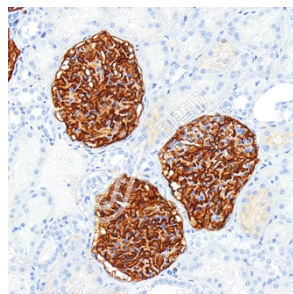
## 储存条件

**储存条件：**自收到之日起 -20°C下储存一年，避免反复冻融。  
**储存缓冲液：**含 0.15% ProClin300 防腐剂, 100 μg/mL 牛血清白蛋白和 50%甘油的磷酸盐缓冲液。

## 图像



IHC 检测 PODXL 蛋白(货号 K5450060).  
 样品: 人食管癌, 4%多聚甲醛 (货号 KSG1101) 固定 12-24 小时.  
 抗原修复: 柠檬酸抗原修复液(干粉, pH 6.0) (KSG1201), 高压锅均匀喷气计时 2 分钟.  
 一抗: 1: 800 稀释, 4°C 孵育过夜.  
 二抗: S-vision 免疫组化多聚二抗(山羊抗兔),即用型 (货号 KB3906), 室温孵育 20 分钟.



IHC 检测 PODXL 蛋白(货号 K5450060).  
 样品: 人肾, 4%多聚甲醛 (货号 KSG1101) 固定 12-24 小时.  
 抗原修复: 柠檬酸抗原修复液(干粉, pH 6.0) (KSG1201), 高压锅均匀喷气计时 2 分钟.  
 一抗: 1: 800 稀释, 4°C 孵育过夜.  
 二抗: S-vision 免疫组化多聚二抗(山羊抗兔),即用型 (货号 KB3906), 室温孵育 20 分钟.

For Research Use Only!

Ver. No.: V1-202603