

Recombinant Anti-ATG7 antibody (兔单克隆抗体)

K546197 -20°C


产品信息

蛋白质全称	泛素样修饰激活酶 ATG7
别名	APG7 LIKE, APG7L, ATG7, Autophagy related protein 7, GSA7, hAGP7, ATG12-activating enzyme E1 ATG7, autophagy related 7
免疫原	人 ATG7 重组蛋白
Uniprot ID	O95352
抗体亚型	IgG, κ
克隆号	SB248
纯化方式	亲和纯化
亚细胞定位	细胞质
预测分子量 / 观测分子量	78 kDa / 78 kDa

应用

WB 免疫印迹

物种: 人, 小鼠, 大鼠
 稀释比: 1: 1000-1: 4000
 阳性样品: THP-1 细胞, HeLa 细胞

ICC/IF 免疫细胞化学/免疫荧光

物种: 人, 小鼠, 大鼠
 稀释比: 1: 200-1: 400

阳性样品:

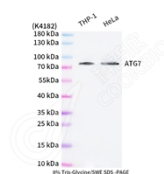
背景

Atg7 is an E1-like enzyme that is specifically involved in autophagosome formation and is essential for autophagy. As an autophagic-related protein it is required for linking to Atg12, Atg5 and Atg8, which are essential for Atg conjugation and autophagosome formation. Atg7 has been reported as an important regulator of autophagy with starvation-induced or chemotherapeutic agent treatment. The high expression level of ATG7 is related to the survival of patients with breast cancer. There are several isoforms of ATG7 protein ranged from 68 kDa to 78 kDa.

储存条件

储存条件: 自收到之日起 -20°C下储存一年, 避免反复冻融。
储存缓冲液: 含 0.15% ProClin300 防腐剂, 100 μg/mL 牛血清白蛋白和 50%甘油的磷酸盐缓冲液。

图像



WB 检测 ATG7 蛋白(货号 K546197).
 样品: 经 RIPA 裂解液(货号 KSG2002)处理的蛋白质.
 封闭: 3%脱脂牛奶(货号 KSGC310001)溶于 TBST 溶液, 室温孵育 1 小时.
 一抗: 1: 1000 稀释, 4°C 孵育过夜.
 二抗: HRP 标记山羊抗兔 IgG (H+L) (货号 KB69909), 1: 5000 稀释, 室温孵育 1 小时.

For Research Use Only!

Ver. No.: V1-202603