

Recombinant Anti-p27 KIP 1 antibody (兔单克隆抗体)

K546551 -20°C


产品信息

蛋白质全称	细胞周期蛋白依赖性激酶抑制剂 1B
别名	CDKN1B, CDKN4, KIP1, MEN1B, MEN4, P27KIP1, cyclin-dependent kinase inhibitor 1B, cyclin dependent kinase inhibitor 1B,p27Kip1, Cdk1b, p27, Cyclin-dependent kinase inhibitor p27, P27-like cyclin-dependent kinase inhibitor
免疫原	人 p27 KIP 1 重组蛋白
Uniprot ID	P46527
抗体亚型	IgG, κ
克隆号	SB289
纯化方式	亲和纯化
亚细胞定位	细胞核, 细胞质, 内体
预测分子量 / 观测分子量	22 kDa / 27 kDa

背景

CDKN1B, also named as P27 or KIP1, is a cyclin-dependent kinase inhibitor, which shares a limited similarity with CDK inhibitor CDKN1A/p21. P27 binds to and prevents the activation of cyclin E-CDK2 or cyclin D-CDK4 complexes, and thus controlling cell cycle progression at G1. The degradation of this protein, which is triggered by its CDK dependent phosphorylation and subsequent ubiquitination by SCF complexes, is required for the cellular transition from quiescence to the proliferative state. Downregulation of P27 has been implicated in the progression of several malignancies, including lung cancer, hepatocellular carcinoma, salivary cancer, oral squamous cell carcinomas, and gastric cancer.

应用

WB 免疫印迹

物种: 人, 小鼠, 大鼠
 稀释比: 1: 500-1: 1000
 阳性样品: 大脑皮层

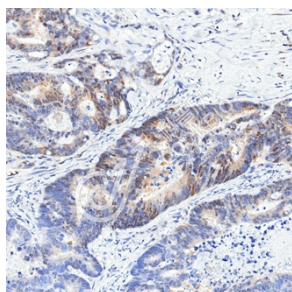
IHC/IF 免疫组织化学/免疫荧光

物种: 人, 大鼠
 稀释比: 1: 500-1: 1000
 阳性样品: 结肠癌, 心

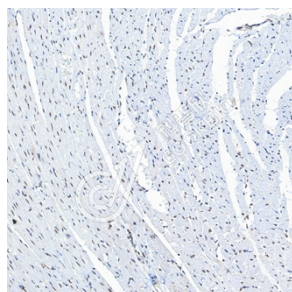
储存条件

储存条件: 自收到之日起 -20°C下储存一年, 避免反复冻融。
储存缓冲液: 含 0.15% ProClin300 防腐剂, 100 μg/mL 牛血清白蛋白和 50%甘油的磷酸盐缓冲液。

图像



IHC 检测 p27 KIP 1 蛋白(货号 K546551).
 样品: 人结肠癌, 4%多聚甲醛 (货号 KSG1101) 固定 12-24 小时.
 抗原修复: 柠檬酸抗原修复液(干粉, pH 6.0) (KSG1201), 高压锅均匀喷气计时 2 分钟.
 一抗: 1: 800 稀释, 4°C 孵育过夜.
 二抗: S-vision 免疫组化多聚二抗(山羊抗兔),即用型 (货号 KB3906), 室温孵育 20 分钟.



IHC 检测 p27 KIP 1 蛋白(货号 K546551).
 样品: 大鼠心, 4%多聚甲醛 (货号 KSG1101) 固定 12-24 小时.
 抗原修复: 柠檬酸抗原修复液(干粉, pH 6.0) (KSG1201), 高压锅均匀喷气计时 2 分钟.
 一抗: 1: 800 稀释, 4°C 孵育过夜.
 二抗: S-vision 免疫组化多聚二抗(山羊抗兔),即用型 (货号 KB3906), 室温孵育 20 分钟.

For Research Use Only!
Ver. No.: V1-202603