

# Recombinant Anti-Beclin 1 antibody (兔单克隆抗体)

K5467223 -20°C



## 产品信息

蛋白质全称	Beclin-1 自噬相关蛋白
别名	Coiled-coil myosin-like BCL2-interacting protein, Protein GT197, BECN1, GT197, APG6, VPS30, Protein GT197, beclin1, beclin-1
免疫原	小鼠 Beclin 1 重组蛋白
Uniprot ID	O88597
抗体亚型	IgG
克隆号	SB315
纯化方式	亲和纯化
预测分子量 / 观测分子量	52 kDa / 60 kDa

## 应用

### WB 免疫印迹

物种：小鼠，大鼠

稀释比：1: 500-1: 2000

阳性样品：脑

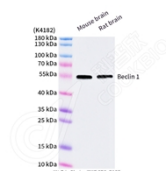
## 背景

Beclin 1 is the first identified mammalian gene to mediate autophagy and also has tumor suppressor and antiviral function. Autophagy, a process of bulk protein degradation through an autophagosomal lysosomal pathway, is important for differentiation, survival during nutrient deprivation, and normal growth control, and is often defective in tumor cells. Beclin 1 was originally isolated in a yeast two hybrid screen to identify Bcl 2 binding partners and maps to a tumor susceptibility locus on human chromosome 17q21 that is frequently monoallelically deleted in human breast, ovarian and prostate cancer.

## 储存条件

**储存条件：**自收到之日起 -20°C下储存一年，避免反复冻融。  
**储存缓冲液：**含 0.15% ProClin300 防腐剂, 100 μg/mL 牛血清白蛋白和 50%甘油的磷酸盐缓冲液。

## 图像



WB 检测 Beclin 1 蛋白(货号 K5467223).  
 样品: 经 RIPA 裂解液(货号 KSG2002)处理的蛋白质.  
 封闭: 3%脱脂牛奶(货号 KSGC310001)溶于 TBST 溶液,  
 室温孵育 1 小时.  
 一抗: 1: 1000 稀释, 4°C 孵育过夜.  
 二抗: HRP 标记山羊抗兔 IgG (H+L) (货号 KB69909), 1:  
 5000 稀释, 室温孵育 1 小时.

For Research Use Only!

Ver. No.: V1-202603