

Recombinant Anti-PD-L1 antibody (兔单克隆抗体)

K5450177 -20°C



产品信息

蛋白质全称	程序性细胞死亡蛋白 1 配体 1
别名	CD274, B7-H, B7H1, PDL-1, PDCD1L1, PDCD1LG1, PDL1, CD274 molecule, Programmed cell death 1 ligand 1
免疫原	小鼠 PD-L1 重组蛋白
Uniprot ID	Q9EP73
抗体亚型	IgG, κ
克隆号	SB374
纯化方式	亲和纯化
亚细胞定位	细胞膜
预测分子量 / 观测分子量	33 kDa / 40-55 kDa

应用

WB 免疫印迹

物种: 小鼠
 稀释比: 1: 500-1: 1500
 阳性样品:

IHC/IF 免疫组织化学/免疫荧光

物种: 小鼠
 稀释比: 1: 500-1: 1500
 阳性样品: 4T1 细胞皮下核-M 模型, 胸腺

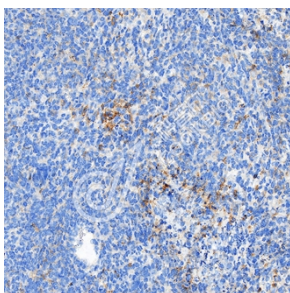
背景

Plays a critical role in induction and maintenance of immune tolerance to self. As a ligand for the inhibitory receptor PDCD1/PD-1, modulates the activation threshold of T-cells and limits T-cell effector response. Through a yet unknown activating receptor, may costimulate T-cell subsets that predominantly produce interleukin-10 (IL10). Can also act as a transcription coactivator: in response to hypoxia, translocates into the nucleus via its interaction with phosphorylated STAT3 and promotes transcription of GSDMC, leading to pyroptosis. The PDCD1-mediated inhibitory pathway is exploited by tumors to attenuate anti-tumor immunity and escape destruction by the immune system, thereby facilitating tumor survival. The interaction with PDCD1/PD-1 inhibits cytotoxic T lymphocytes (CTLs) effector function.

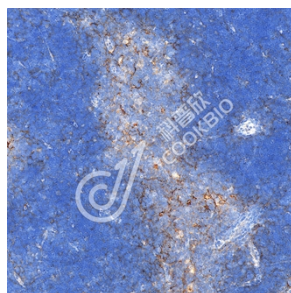
储存条件

储存条件: 自收到之日起 -20°C下储存一年, 避免反复冻融。
储存缓冲液: 含 0.15% ProClin300 防腐剂, 100 μg/mL 牛血清白蛋白和 50%甘油的磷酸盐缓冲液。

图像



IHC 检测 PD-L1 蛋白(货号 K5450177).
 样品: 小鼠 4T1 细胞皮下核-M 模型, 4%多聚甲醛 (货号 KSG1101) 固定 12-24 小时.
 抗原修复: Tris-EDTA 抗原修复液(pH 9.0) (KSG1203), 100°C, 25 分钟.
 一抗: 1: 1000 稀释, 4°C 孵育过夜.
 二抗: S-vision 免疫组化多聚二抗(山羊抗兔),即用型 (货号 KB3906), 室温孵育 20 分钟.



IHC 检测 PD-L1 蛋白(货号 K5450177).
 样品: 小鼠胸腺, 4%多聚甲醛 (货号 KSG1101) 固定 12-24 小时.
 抗原修复: Tris-EDTA 抗原修复液(pH 9.0) (KSG1203), 100°C, 25 分钟.
 一抗: 1: 1000 稀释, 4°C 孵育过夜.
 二抗: S-vision 免疫组化多聚二抗(山羊抗兔),即用型 (货号 KB3906), 室温孵育 20 分钟.

For Research Use Only!

Ver. No.: V1-202603