

# Recombinant Anti-MLKL antibody (兔单克隆抗体)

K5467097 -20°C



## 产品信息

蛋白质全称	混合谱系激酶结构域样蛋白
别名	hMLKL, Mixed lineage kinase domain like, Mixed lineage kinase domain like protein, Mixed lineage kinase domain-like protein, mixed lineage kinase domain like pseudokinase
免疫原	人 MLKL 重组蛋白
Uniprot ID	Q8NB16
抗体亚型	IgG
克隆号	SB386
纯化方式	亲和纯化
亚细胞定位	细胞质, 细胞膜, 细胞核
预测分子量 / 观测分子量	54 kDa / 54 kDa

## 应用

### WB 免疫印迹

物种: 人, 小鼠, 大鼠  
 稀释比: 1: 1000-1: 2000  
 阳性样品:

### IHC/IF 免疫组织化学/免疫荧光

物种: 人  
 稀释比: 1: 500-1: 1500  
 阳性样品: 结肠癌, 卵巢癌

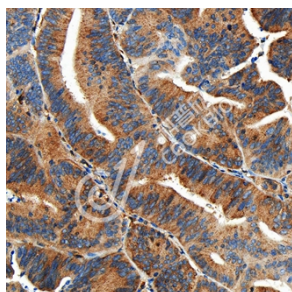
## 背景

This gene belongs to the protein kinase superfamily. The encoded protein contains a protein kinase-like domain; however, is thought to be inactive because it lacks several residues required for activity. This protein plays a critical role in tumor necrosis factor (TNF)-induced necroptosis, a programmed cell death process, via interaction with receptor-interacting protein 3 (RIP3), which is a key signaling molecule in necroptosis pathway. Inhibitor studies and knockdown of this gene inhibited TNF-induced necrosis. High levels of this protein and RIP3 are associated with inflammatory bowel disease in children. Alternatively spliced transcript variants have been described for this gene.

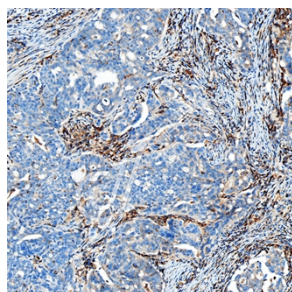
## 储存条件

**储存条件:** 自收到之日起 -20°C下储存一年, 避免反复冻融。  
**储存缓冲液:** 含 0.15% ProClin300 防腐剂, 100 µg/mL 牛血清白蛋白和 50%甘油的磷酸盐缓冲液。

## 图像



IHC 检测 MLKL 蛋白(货号 K5467097).  
 样品: 人结肠癌, 4%多聚甲醛 (货号 KSG1101) 固定 12-24 小时.  
 抗原修复: 柠檬酸抗原修复液(干粉, pH 6.0) (KSG1201), 高压锅均匀喷气计时 2 分钟.  
 一抗: 1: 1000 稀释, 4°C 孵育过夜.  
 二抗: S-vision 免疫组化多聚二抗(山羊抗兔),即用型 (货号 KB3906), 室温孵育 20 分钟.



IHC 检测 MLKL 蛋白(货号 K5467097).  
 样品: 人卵巢癌, 4%多聚甲醛 (货号 KSG1101) 固定 12-24 小时.  
 抗原修复: 柠檬酸抗原修复液(干粉, pH 6.0) (KSG1201), 高压锅均匀喷气计时 2 分钟.  
 一抗: 1: 1000 稀释, 4°C 孵育过夜.  
 二抗: S-vision 免疫组化多聚二抗(山羊抗兔),即用型 (货号 KB3906), 室温孵育 20 分钟.

For Research Use Only!

Ver. No.: V1-202603