

Recombinant Anti-CA19-9 antibody (小鼠单克隆抗体)

K5450375 -20°C



产品信息

免疫原	人 CA19-9 重组蛋白
抗体亚型	IgM
克隆号	SB503
纯化方式	亲和纯化
亚细胞定位	细胞质

应用

IHC/IF 免疫组织化学/免疫荧光

物种: 人
 稀释比: 1: 300-1: 600
 阳性样品: 结肠癌, 胰腺

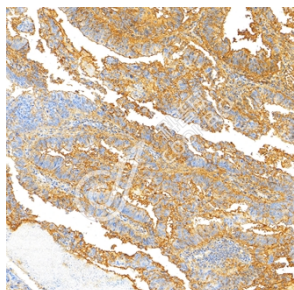
背景

CA19-9 (Carbohydrate Antigen 19-9) is a carbohydrate antigen, belonging to the category of oligosaccharide tumor-associated antigens, and is a glycolipid on the cell membrane. It is formed from the precursor substances of Lewis antigens (including Le-a and Le-b) under the joint action of sialyltransferase and fucosyltransferase. CA19-9 is an important tumor marker, especially in the diagnosis and monitoring of pancreatic cancer, where the levels of CA19-9 are elevated in over 80% of patients with pancreatic cancer. CA19-9 can also be used in the clinical auxiliary detection of gastric cancer, colorectal cancer, gallbladder cancer, cholangiocarcinoma, and liver cancer.

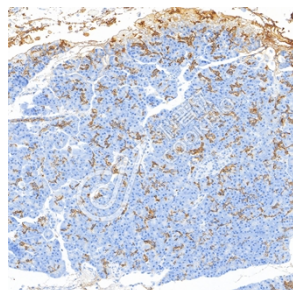
储存条件

储存条件: 自收到之日起 -20°C下储存一年, 避免反复冻融。
储存缓冲液: 含 0.15% ProClin300 防腐剂, 100 µg/mL 牛血清白蛋白和 50%甘油的磷酸盐缓冲液。

图像



IHC 检测 CA19-9 蛋白(货号 K5450375).
 样品: 人结肠癌, 4%多聚甲醛(货号 KSG1101) 固定 12-24 小时.
 抗原修复: Tris-EDTA 抗原修复液(pH 9.0) (KSG1203), 100°C, 25 分钟.
 一抗: 1: 500 稀释, 4°C 孵育过夜.
 二抗: S-vision 免疫组化多聚二抗(山羊抗小鼠), 即用型(货号 KB3903), 室温孵育 20 分钟.



IHC 检测 CA19-9 蛋白(货号 K5450375).
 样品: 人胰腺, 4%多聚甲醛(货号 KSG1101) 固定 12-24 小时.
 抗原修复: Tris-EDTA 抗原修复液(pH 9.0) (KSG1203), 100°C, 25 分钟.
 一抗: 1: 500 稀释, 4°C 孵育过夜.
 二抗: S-vision 免疫组化多聚二抗(山羊抗小鼠), 即用型(货号 KB3903), 室温孵育 20 分钟.

For Research Use Only!

Ver. No.: V1-202603