

# Recombinant Anti-MEK1/2 antibody (兔单克隆抗体)

K5450417 -20°C



## 产品信息

蛋白质全称	双特异性丝裂原活化蛋白激酶激酶 1
别名	MEK1, PRKMK1, MAP2K1, MAPK/ERK kinase 1 (MEK 1), ERK activator kinase 1, MAP kinase kinase 1, MAPKK 1, MKK1, MAP kinase kinase 2, Prkmk2, Mek2, Mkk2, Map2k2, ERK activator kinase 2, MAPK/ERK kinase 2, MAPKK 2, PRKMK 2, PRKMK2 V
免疫原	KLH 偶联的人 MEK1 合成肽
Uniprot ID	Q02750
抗体亚型	IgG
克隆号	SB544
纯化方式	亲和纯化
亚细胞定位	细胞质, 细胞核
预测分子量 / 观测分子量	43 kDa / 44 kDa

## 背景

Dual specificity protein kinase which acts as an essential component of the MAP kinase signal transduction pathway. Binding of extracellular ligands such as growth factors, cytokines and hormones to their cell-surface receptors activates RAS and this initiates RAF1 activation. RAF1 then further activates the dual-specificity protein kinases MAP2K1/MEK1 and MAP2K2/MEK2. Both MAP2K1/MEK1 and MAP2K2/MEK2 function specifically in the MAPK/ERK cascade, and catalyze the concomitant phosphorylation of a threonine and a tyrosine residue in a Thr-Glu-Tyr sequence located in the extracellular signal-regulated kinases MAPK3/ERK1 and MAPK1/ERK2, leading to their activation and further transduction of the signal within the MAPK/ERK cascade. Activates BRAF in a KSR1 or KSR2-dependent manner; by binding to KSR1 or KSR2 releases the inhibitory intramolecular interaction between KSR1 or KSR2 protein kinase and N-terminal domains which promotes KSR1 or KSR2-BRAF dimerization and BRAF activation.

## 应用

### WB 免疫印迹

物种: 人, 小鼠, 大鼠  
 稀释比: 1: 5000-1: 100000  
 阳性样品:

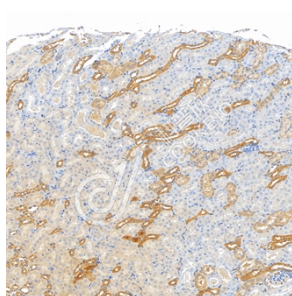
### IHC/IF 免疫组织化学/免疫荧光

物种: 人, 小鼠, 大鼠  
 稀释比: 1: 250-1: 500  
 阳性样品: 脑, 肾, 卵巢癌

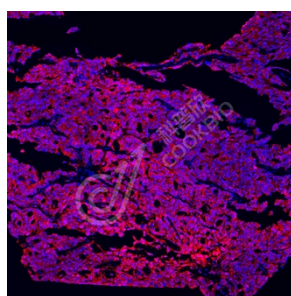
## 储存条件

**储存条件:** 自收到之日起 -20°C下储存一年, 避免反复冻融。  
**储存缓冲液:** 含 0.15% ProClin300 防腐剂, 100 µg/mL 牛血清白蛋白和 50%甘油的磷酸盐缓冲液。

## 图像



IHC 检测 MEK1/2 蛋白(货号 K5450417).  
 样品: 小鼠肾, 4%多聚甲醛 (货号 KSG1101) 固定 12-24 小时.  
 抗原修复: Tris-EDTA 抗原修复液(pH 9.0) (货号 KSG1203), 水浴 100°C, 25 分钟.  
 一抗: 1: 400 稀释, 4°C 孵育过夜.  
 二抗: S-vision 免疫组化多聚二抗(山羊抗兔),即用型 (货号 KB3906), 室温孵育 20 分钟.



IF 检测 MEK1/2 蛋白(货号 K5450417)(红色).  
 样品: 人卵巢癌, 4%多聚甲醛 (货号 KSG1101) 固定 12-24 小时.  
 抗原修复: Tris-EDTA 抗原修复液(pH 9.0) (货号 KSG1203), 水浴 90°C, 30 分钟.  
 封闭: 3% BSA (货号 KSGC305010) 的 PBS 溶液, 室温孵育 30 分钟.  
 一抗: 1: 400 稀释, 4°C 孵育过夜.  
 二抗: Cy3 标记山羊抗兔 IgG (H+L) (货号 KB63909), 1: 300 稀释, 室温孵育 1 小时.



IHC 检测 MEK1/2 蛋白(货号 K5450417).  
 样品: 大鼠脑, 4%多聚甲醛 (货号 KSG1101) 固定 12-24 小时.  
 抗原修复: Tris-EDTA 抗原修复液(pH 9.0) (货号 KSG1203), 水浴 100°C, 25 分钟.  
 一抗: 1: 400 稀释, 4°C 孵育过夜.  
 二抗: S-vision 免疫组化多聚二抗(山羊抗兔),即用型 (货号 KB3906), 室温孵育 20 分钟.

For Research Use Only!

Ver. No.: V1-202603