

# Recombinant Anti-Melanoma gp100 antibody (小鼠单克隆抗体)

**K5450480** -20°C


## 产品信息

蛋白质全称	黑色素细胞蛋白 PMEL
别名	95 kDa melanocyte specific secreted glycoprotein, 95 kDa melanocyte-specific secreted glycoprotein, D12S53E, gp100, M-beta, ME20, ME20 M/ME20 S, ME20-M, ME20-S, ME20M, ME20M/ME20S, ME20S, Melanocyte lineage specific antigen GP100, Melanocyte protein mel 17, Melanocyte protein Pmel 17, Melanocyte protein Pmel 17 precursor, Melanocytes lineage-specific antigen GP100, Melanoma associated ME20 antigen, Melanoma gp100, Melanoma-associated ME20 antigen, Melanosomal matrix protein 17, Melanosomal matrix protein17, P1, p100, p26, PMEL 17, PMEL, Premelanosome protein, Secreted melanoma-associated ME20 antigen, SI, SIL, D12S53E, PMEL17, SILV, PMEL
免疫原	人 Melanoma gp100 重组蛋白
UniProt ID	P40967
抗体亚型	IgG1
克隆号	SB580

Forms physiological amyloids that play a central role in melanosome morphogenesis and pigmentation. The maturation of unpigmented premelanosomes from stage I to II is marked by assembly of processed amyloidogenic fragments into parallel fibrillar sheets, which elongate the vesicle into a striated ellipsoidal shape. In pigmented stage III and IV melanosomes, the amyloid matrix serves as a platform where eumelanin precursors accumulate at high local concentrations for pigment formation. May prevent pigmentation-associated toxicity by sequestering toxic reaction intermediates of eumelanin biosynthesis pathway.

## 应用

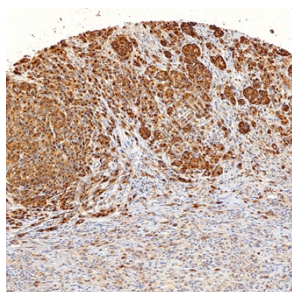
### IHC/IF 免疫组织化学/免疫荧光

物种：人  
 稀释比：1: 500-1: 1500  
 阳性样品：黑色素瘤

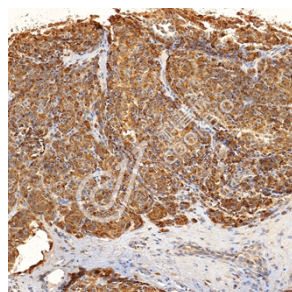
### 储存条件

**储存条件：**自收到之日起 -20°C下储存一年，避免反复冻融。  
**储存缓冲液：**含 0.15% ProClin300 防腐剂, 100 µg/mL 牛血清白蛋白和 50%甘油的磷酸盐缓冲液。

## 图像



IHC 检测 Melanoma gp100 蛋白(货号 K5450480).  
 样品: 人黑色素瘤, 4%多聚甲醛 (货号 KSG1101) 固定 12-24 小时.  
 抗原修复: Tris-EDTA 抗原修复液(pH 9.0) (货号 KSG1203), 水浴 100°C, 25 分钟.  
 一抗: 1: 1000 稀释, 4°C 孵育过夜.  
 二抗: S-vision 免疫组化多聚二抗(山羊抗小鼠), 即用型 (货号 KB3903), 室温孵育 20 分钟.



IHC 检测 Melanoma gp100 蛋白(货号 K5450480).  
 样品: 人黑色素瘤, 4%多聚甲醛 (货号 KSG1101) 固定 12-24 小时.  
 抗原修复: Tris-EDTA 抗原修复液(pH 9.0) (货号 KSG1203), 水浴 100°C, 25 分钟.  
 一抗: 1: 1000 稀释, 4°C 孵育过夜.  
 二抗: S-vision 免疫组化多聚二抗(山羊抗小鼠), 即用型 (货号 KB3903), 室温孵育 20 分钟.

**For Research Use Only!**
**Ver. No.: V1-202603**