

# Recombinant Anti-Met (c-Met) antibody (兔单克隆抗体)

**K5450516** -20°C


## 产品信息

蛋白质全称	肝细胞生长因子受体
别名	MET, Scatter factor receptor (SF receptor), Tyrosine-protein kinase Met
免疫原	KLH 偶联的人 HGFR/c-MET 合成肽
Uniprot ID	P08581
抗体亚型	IgG
克隆号	SB608
纯化方式	亲和纯化
亚细胞定位	膜, 分泌型
预测分子量 / 观测分子量	156 kDa / 170 kDa

## 应用

### WB 免疫印迹

物种: 人  
 稀释比: 1: 500-1: 2000  
 阳性样品:

### IHC/IF 免疫组织化学/免疫荧光

物种: 人  
 稀释比: 1: 1000-1: 3000  
 阳性样品: 肾, 卵巢癌

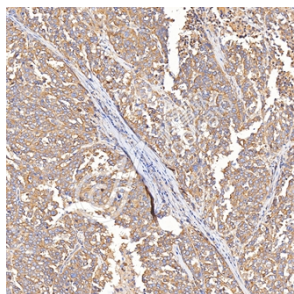
## 背景

Receptor tyrosine kinase that transduces signals from the extracellular matrix into the cytoplasm by binding to hepatocyte growth factor/HGF ligand. Regulates many physiological processes including proliferation, scattering, morphogenesis and survival. Ligand binding at the cell surface induces autophosphorylation of MET on its intracellular domain that provides docking sites for downstream signaling molecules. Following activation by ligand, interacts with the PI3-kinase subunit PIK3R1, PLCG1, SRC, GRB2, STAT3 or the adapter GAB1. Recruitment of these downstream effectors by MET leads to the activation of several signaling cascades including the RAS-ERK, PI3 kinase-AKT, or PLCgamma-PKC. The RAS-ERK activation is associated with the morphogenetic effects while PI3K/AKT coordinates prosurvival effects. During embryonic development, MET signaling plays a role in gastrulation, development and migration of neuronal precursors, angiogenesis and kidney formation. During skeletal muscle development, it is crucial for the migration of muscle progenitor cells and for the proliferation of secondary myoblasts.

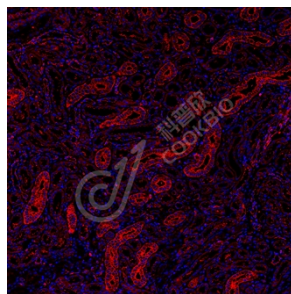
## 储存条件

**储存条件:** 自收到之日起 -20°C下储存一年, 避免反复冻融。  
**储存缓冲液:** 含 0.15% ProClin300 防腐剂, 100 µg/mL 牛血清白蛋白和 50%甘油的磷酸盐缓冲液。

## 图像



IHC 检测 Met (c-Met) 蛋白(货号 K5450516).  
 样品: 人卵巢癌, 4%多聚甲醛 (货号 KSG1101) 固定 12-24 小时.  
 抗原修复: Tris-EDTA 抗原修复液(pH 9.0) (货号 KSG1203), 水浴 100°C, 25 分钟.  
 一抗: 1: 2000 稀释, 4°C 孵育过夜.  
 二抗: S-visualization 免疫组化多聚二抗(山羊抗兔),即用型 (货号 KB3906), 室温孵育 20 分钟.



IF 检测 Met (c-Met) 蛋白(货号 K5450516)(红色).  
 样品: 人肾, 4%多聚甲醛 (货号 KSG1101) 固定 12-24 小时.  
 抗原修复: Tris-EDTA 抗原修复液(pH 9.0) (货号 KSG1203), 水浴 100°C, 25 分钟.  
 封闭: 3% BSA (货号 KSGC305010) 的 PBS 溶液, 室温孵育 30 分钟.  
 一抗: 1: 2000 稀释, 4°C 孵育过夜.  
 二抗: Cy3 标记山羊抗兔 IgG (H+L) (货号 KB63909), 1: 300 稀释, 室温孵育 1 小时.

**For Research Use Only!**
**Ver. No.: V1-202603**